

# Forever Tails

As another year draws to an end, we at AFH look back on everything we have accomplished together – all the lives we have saved.

We faced a lot of challenges in 2014. Every time we opened our email, there were dozens, and sometimes hundreds of requests for help. How do we pick which dogs we can save? It is a life and death decision that we do not take lightly. Every single day is a balancing act. We have to select puppies and dogs based on several criteria:

- **Foster home availability:** Some foster homes care for puppies only; some foster pregnant moms; some care for adults or seniors; and a few special foster homes care for animals with disabilities.
- **Finances:** Finances dictate what animals we select. We try to select a mix of animals that require “standard” vetting and some that may need more aggressive or specialized care. We don’t want to leave dogs with serious medical conditions behind. They don’t have a chance of getting out of a shelter without us, but we have to make sure that we can cover their medical costs.
- **Adoptability:** Adoptability doesn’t mean the cutest dogs; rather, we select the dogs that we know have a good chance of getting a forever home quickly. This involves a mix of puppies, adult dogs, seniors, and special needs dogs.

Our success is truly a team effort. We do the day to day rescue work of working with poor rural shelters; identifying puppies and dogs we can help and getting them to us; fostering; providing vet care, grooming, and training; managing adoption events; fundraising; marketing; advertising; and running the business on a daily basis – but we can’t do any of this without you – our supporters.

Once we commit to an animal in need, it is our responsibility to provide whatever level of care is necessary to restore him or her to health. We all know that quality vet care is expensive. That’s where you come in. Your generosity has allowed us to save thousands of innocent puppies and dogs since our incorporation in 2002. You have saved puppies

## Adoption Information

Are you looking for a new furry family member? Visit [www.aforeverhome.org](http://www.aforeverhome.org) or stop by an adoption event to find the perfect one. We have many wonderful dogs waiting for forever homes. Once you’ve fallen in love, the next step is to fill out an adoption application to get the ball rolling.

Please see our website for our adoption schedule.

## Contact Information

<b>Phone</b>	703.961.8690
<b>Fax</b>	866.863.6890
<b>Address</b>	P.O. Box 222801 Chantilly, VA 20153
<b>Email</b>	<a href="mailto:info@aforeverhome.org">info@aforeverhome.org</a>
<b>Website</b>	<a href="http://www.aforeverhome.org">www.aforeverhome.org</a>
<b>Facebook</b>	<a href="http://www.facebook.com/afh2002">www.facebook.com/afh2002</a>
<b>Twitter</b>	<a href="https://twitter.com/aforeverhome">@aforeverhome</a> <a href="https://twitter.com/aforeverhome">twitter.com/aforeverhome</a>



**Ginny is searching for  
her forever home**  
*Read about her on Page 2*

*continued on page 3*

"There is no psychiatrist in the world like a puppy licking your face."  
— Ben Williams

## In Search of My Forever Home: Ginny

### Ginny (Female)

**Breed:** Labrador Retriever Mix

**Age:** 8 years

Ginny has been through a lot this past year, including giving birth to six beautiful pups. They have all been adopted and now it's her turn to find a forever home. We know that someone is going to fall in love with this sweet girl.

Ginny is a lovely mid-sized dog. She likes other dogs and adores her foster mom. She is a little shy but is coming around. A quiet household would be best for her – someplace where she can get all the love and attention she deserves.

If you would like to meet Ginny or need more information about her, please email her assistant at [info@aforeverhome.org](mailto:info@aforeverhome.org).



### How you can help...

Make recurring monthly donations

Donate items from our Amazon Wishlist

Donate a portion of your Ebay sales

Become a foster home

Help at adoption events

Perform home visits

Include AFH in estate planning

Donate your used car

### Holiday Giving



Historically, the holiday season is the time of year when most people donate to charities near and dear to their hearts. We at AFH receive the bulk of our donations during this time of the year; however, we need your support all year long to continue saving lives.

There are several ways that you can help us throughout the year. The first is by doing what we all do on an ongoing basis – shopping. Simply by going to [www.aforeverhome.org](http://www.aforeverhome.org), scrolling down to the Amazon box, searching for an item you need, and purchasing it, you are helping homeless dogs. AFH gets a donation at no cost to you every time you shop. If you are signed up for the Amazon Smiles program, we get yet another donation.

Another way you can help is by signing up for recurring monthly donations. Go to [www.aforeverhome.org](http://www.aforeverhome.org), click on JustGive.org, make a donation, and check the box that says "make this a monthly recurring donation". Your monthly gift in any amount will allow us to budget effectively and have the means to respond to any emergencies that may arise. There are no checks to write, no stamps to purchase, and no envelopes to search for. Best of all, you are helping homeless puppies and dogs on an ongoing basis.



## Dr. Elwood Pawsington



**Dear Dr. Elwood,**

Recently, my dog has started to chew her paws quite a bit and has had a couple of ear infections. I know she does not have fleas and I clean her ears regularly. Does this sound like it could be a food allergy?

Sincerely,  
Wondering in Winchester

**Dear Wondering,**

It sounds like a visit to the vet could be in order just to rule out any other conditions. Just like humans, pets can experience food allergies, and they can appear at any time. Some of the most common signs of a food allergy in dogs are itchy or irritated skin, diarrhea, vomiting, constant licking, ear infections, and scooting. You know your pet better than anyone, so if they develop any of those symptoms, and your vet has ruled out any other illness, it's probably a good idea to investigate further.

In some pets, an elimination diet is an efficient way to figure out what is upsetting their system. The best way to do this is to introduce a low allergen diet – whether it's home cooked or pre-packaged. This will usually consist of a single protein that your pet does not regularly eat, and a carbohydrate.

Certain proteins, such as venison, are usually less allergenic than chicken or beef. Your pet should be on this diet for a minimum of three weeks.

After that, you can introduce just one protein. Try it out for several weeks because sometimes the reaction is not immediate, as it can be in humans. If your pet seems to tolerate the protein after a three-week period, you can add in another protein and so on. If there is a reaction, you can assume that an allergy to that food is possible. It's a good idea to keep a food journal to share with your vet. Unfortunately, food allergies in pets are becoming more common.

In addition to an elimination diet, there are also tests that can be performed at the Vet's office. There are blood tests, which can measure reactions to specific antigens, as well as skin tests, which can also predict reactions to certain possible allergens. The elimination diet, however, is the gold standard in diagnosing and treating food allergies.

In addition to food allergies, it's important to remember that dogs can also have environmental allergies to many different materials, such as shampoos, flea treatments, grass, etc., so that is something to keep in mind as well.

It's important to take the time to figure out what is bothering your dog – she will certainly appreciate it when her skin and ears are feeling better!



## continued from page 1

with parvo, broken limbs, and a variety of illnesses; financed amputations and wheelchairs for two dogs this year alone; covered the cost of lifesaving surgeries; and provided all of our puppies and dogs with standard vet care.

We are grateful for you. We rely on you. We can't do it without you.

As you pet your dog, play ball, and

cuddle up with him or her at night, please remember that thousands more are sitting in cold, lonely shelters with little hope of finding a forever home without your help.

You are their hope.

We know that you have your choice of charities to help, and we appreciate your confidence in us and your ongoing

support. Please remember AFH as you are making your holiday donations this year, and know that every penny donated to us goes directly to help a puppy or dog in need.

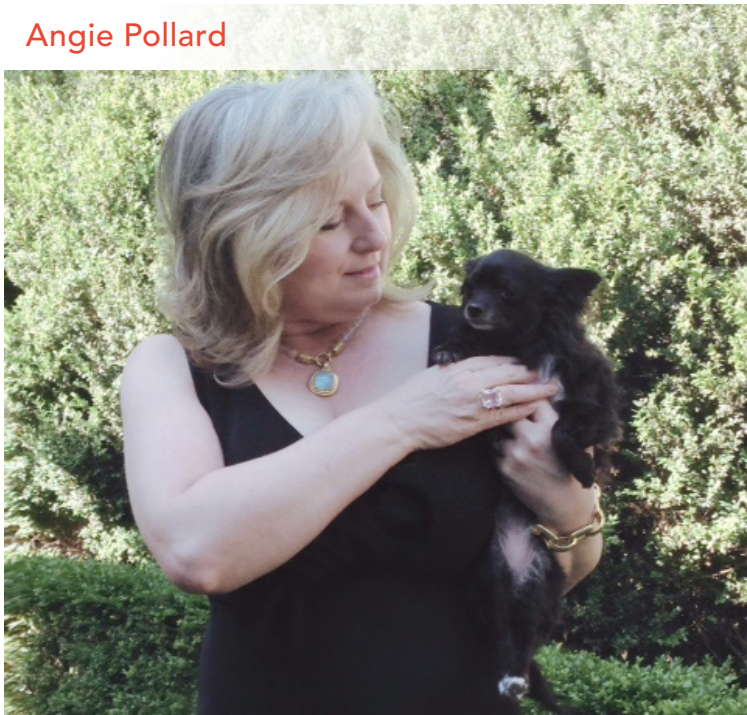
Thank you for everything you have done for so many deserving animals. Let's make 2015 even better!



"Everyone thinks they have the best dog. And none of them are wrong." — W. R. Purche

## Volunteer Spotlight

Angie Pollard

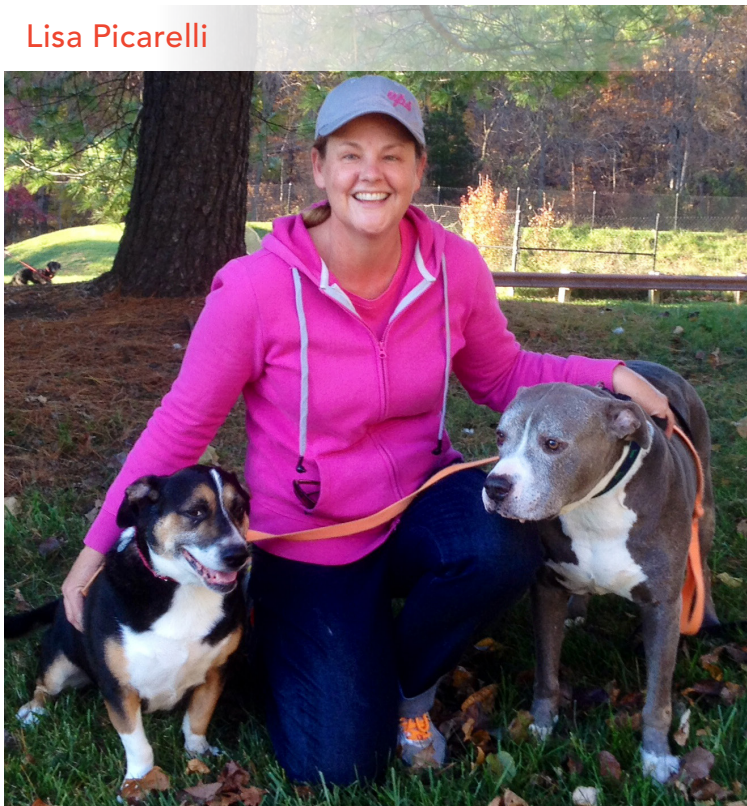


When Angie was a child, her mother rescued and rehabilitated wild animals. As Angie grew up, she was a groomer and a vet tech – so she's a perfect fit for AFH. Her first foster experience with us was our big Yorkie Claus rescue last Christmas and she has fostered eight more dogs since then. She is looking forward to helping even more dogs!

When we asked Angie what compels her to help, she responded that "I like working with AFH because I feel as if it is a tight knit family of people that care very much for the welfare of animals. Everyone is always so diligent to step in and help with these dogs. I have always had a strong passion for helping all animals. I like having the ability to help homeless dogs find their forever homes. Though the job of helping these poor animals will never be completely done, it is so great to have such a wonderful organization like AFH to at least always put a dent in this battle. Thank you so much for all your hard work."

Thank you Angie!

Lisa Picarelli



Lisa is a long-term volunteer who fosters for us. She often takes dogs who need a little extra help or dogs with disabilities. Some of you may remember Natalie – she recently had a leg amputated and was fitted for a wheelchair. Lisa fostered her until she was well enough to be adopted.

Lisa grew up with dogs and adopted her first (an American Pitbull Terrier) in 2007 on his last day at the shelter. The moment she laid eyes on him it was love at first sight. She has always been against breed discrimination.

Lisa started volunteering for AFH in 2008 but never thought she could be a foster home because she thought it would be too hard to give them up – then a call came for her to "hold" a litter of puppies for 24 hours and she just had to say yes.

Lisa has since fostered several puppies, young and older dogs, as well as special needs dogs. She tells us that "Dogs with special needs have a very special place in my heart. I have learned so much in the last six years and know in my heart this is what I'm here to do. Animals have no voice. We are their voice!!"

Thank you Lisa!





## Adopter's Corner: Olaf

We recently received a note letting us know that Olaf (formally Bo) is doing great in his new home with Brooke and her family. Olaf was recently rescued from Kentucky and didn't have a rosy future there, but all that has changed. Brooke tells us that "He is so sweet and lovable...AND...playful, hilarious, and terribly messy when he drinks water. And we just ADORE him!"

Olaf gets along with his new friend Kilo, loves kids, and enjoys riding in the car.



## Thanks Camden!

Camden Cares is a community service team comprised of employees of Camden Property Trust that organizes and plans events that help their local community. This year, Joelle Salviati (a huge dog lover) was chosen to be a part of the committee and designated AFH as the recipient of their donation drive.

In June 2014, 18 Camden communities in the DC metro area placed donation boxes in their Welcome Centers so residents and employees could donate – and donate they did! Joelle and her friends Yesenia, Kyle, Angel, Will, Nichole, Heidi, and Arlow got a mountain of donations loaded into her car and brought them to us. Donations included dog and cat food, toys, bowls, leashes, and other necessities to care for our pets. We wanted to spread the wealth so we shared cat items with our colleagues.

We are very grateful to our friends at Camden – what a wonderful group of people! Thank you all for your hard work!



"Anybody who doesn't know what soap tastes like, never washed a dog."

— Franklin P. Jones0

## Goodbye to Liberty



Jay and Pam recently wrote to tell us about the passing of their beloved dog Liberty, who they adopted in 2004 from AFH.

Jay and Pam tell us that "We feel as though there is a huge hole in our family now. She was so sweet and smart. She truly was a little person covered in fur. Thank goodness we still have Justice (the 90 pound lap dog) that we adopted from your organization in 2005. He has made Liberty passing more bearable. His sole purpose in life is to give and receive love. He also likes to eat. In a perfect world, he would eat while getting love. We would like to thank you for 10 wonderful years with Liberty and hopefully many more with Justice."

On behalf of all of us at AFH, please accept our condolences on your loss and thank you for giving two dogs a wonderful home.

## Farewell to Tia

The Merrill family adopted Tia in March of 2008 from AFH. They recently wrote to tell us about her passing.

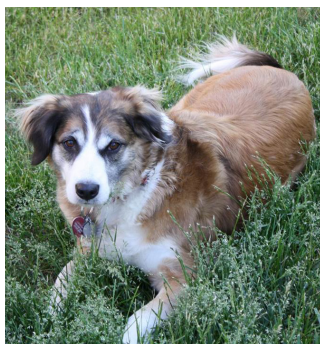
"It is with heavy, heavy hearts that we share with you her passing. She was a wonderful dog, a true member of our family and will be forever missed. She was not a lap dog but one you could scoop up and cuddle. She was so full of personality for such a little dog and thus had great presence in our home, loved to go on walks, loved the car, and was such an easy dog despite the anxiety that plagued her from losing her sight, and the most recent diagnosis of oral cancer. She persevered through two surgeries to give us more time, until there were no more options. We all loved her yet we knew she loved mom best and needed her the most.

Thank you AFH for giving us Tia. Her paw print will forever be in our hearts. She was our first rescue and we will continue to support the adoption of rescues as well as foster when possible."



What a wonderful tribute to Tia to help other dogs in need. Please accept our condolences on the loss of Tia.

## Goodbye to Cinnamon



AFH volunteer Erin Roberts just lost her first AFH dog, Cinnamon. Cinnamon had been through a tough time and had some special needs. She was timid and skinny and wormy and didn't bond to Erin's family right away, but slowly and surely she started to trust. Erin tells us that "She was the best dog I could have ever hoped for. She stood by me through the roughest years of my life. Her devotion was absolute and unquestioning. She was not an effusive dog -- just a steady, solid presence. All she wanted was to lean up against me and get petted, or go roll in the grass."

Cinnamon was healthy for 7 1/2 years but suddenly became ill and her body just gave out. The vet isn't sure what happened -- maybe sudden shock from Addison's Disease, but also a possible stroke and kidney and intestinal cancer. She just shut down and her neurologic function was not improving.

We at AFH send our condolences on the loss of Cinnamon. We all know what it's like to lose a furry family member.



## *In Memoriam*

**We want to acknowledge some recent donations in memory of beloved friends...**

**Lori M.** *in memory of Scout*

**Martin and Caroline P.** *in memory of Autumn and Fatboy*

**The estate of Sara Tuttle**

**The Shapiro family** *in memory of Bailey and Nike*

**Beth H., George and Alyce S., Jane F, Teresa G.**

**Stacey H., Charles and Mary H., Arlene L.,  
Patricia and Daniel D., Jerry and Lorraine C.,  
and Laura Z.,** *in memory of Sherry B*

**Brian and Connie S.** *dedicated to Jen Bergland in  
memory of Ozzie*

**Stacey C.** *dedicated to Richard Castaldo*

**Ralph W.** *in memory of Dr. Andre van Tilborg*

**Phil D.** *dedicated to Chris Dolliff in memory of Rock*

**Debbie B.** *in memory of Charlie, Katie,  
Dezi, Austin, and Greta*

**Teresa E.** *in memory of Percy*

**Lisa A.** *in memory of Luke*

**Durie and Don W.** *in memory of Annie*

**Drew and Trish T.** *in memory of Peanut*

## Casino Night 2015

We know that it seems a long way off, but we are already planning for our 2015 Casino Night and Silent Auction. This will be our fourth year, and we expect it to be even bigger and better than the last ones! For those of you who attended last year, you know how much fun it was (and how crowded!). Our plan for next year is to utilize the outside patio to give us more space. It will be enclosed, heated, and lighted.

It takes several months to plan such a large event, and we are reaching out to you, our supporters, to donate silent auction and/or raffle items. Historically

we have had a wide variety of items donated – from pet products/services to airline tickets, homemade items, sports memorabilia, jewelry.... and the list goes on. We are particularly interested in airline miles (that can be turned into airline tickets), timeshares, event tickets (sports, concerts, etc.), personal services, outdoor activities (hot air balloon rides, fishing charters, etc.), and pet-related products and services.

We are also soliciting sponsors to cover our costs. There are a range of sponsorships available and we

will send a sponsorship packet to interested parties upon request.

Casino Night is our biggest fundraiser of the year and all proceeds go to our own Forever Home Fund – a fund we will use to purchase and develop a property where we can base our rescue, do adoptions and provide humane education, and build a boarding facility to support the rescue.

Your generosity is the key to our success. Please email [patti@aforeverhome.net](mailto:patti@aforeverhome.net) if you would like to donate goods or services or would like information on sponsorships.



## Happy Holidays and Thank You

We know that you've heard it before, but your generosity saves lives. We couldn't do what we do without your financial support. We have saved thousands of lives together and made a huge impact on the pet overpopulation problem. We hope that you will join us in saving even more lives in 2015, and perhaps consider a monthly recurring donation. Thank you for everything you've done to save so many lives. We wish that every dog could be as lucky as the ones you have helped.

On behalf of all of us at AFH, we wish all of you a Merry Christmas, Happy Hanukkah, Happy Kwanzaa, Happy New Year, and a peaceful 2015.



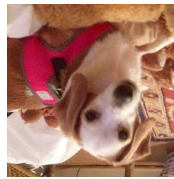
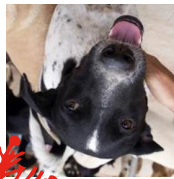


A Forever Home P.O. Box 222801 | Chantilly, VA 20153  
RESCUE FOUNDATION

NONPROFIT ORG  
U.S. POSTAGE  
PAID  
PERMIT NO 349  
DULLES, VA

Remember that you can receive your AFH newsletter electronically if you prefer. Please email us at [info@aforeverhome.org](mailto:info@aforeverhome.org) to switch to an e-newsletter.

*Happy Holidays to  
all of our friends!*



Editor: Patti Stinson  
Designer: Cheryl Sims  
Elwood's Assistant: Tanya Rapp

# Forever Tails

November 2014

Finding Forever Homes  
For Dogs In Need

A Forever Home  
RESCUE FOUNDATION

